

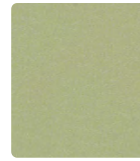
FLORENTINO



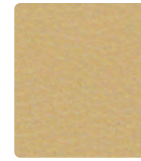
FT-026 Dove



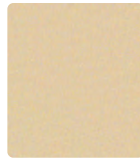
FT-012
Dijon



FT-033
Willow



FT-027
Khaki



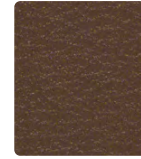
FT-017
Biscuit



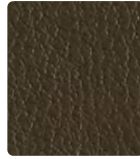
FT-029
Mango



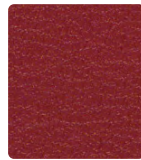
FT-043
Basil



FT-010
Latte



FT-020
Bark



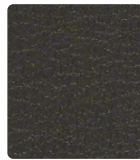
FT-001
Scarlet



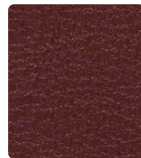
FT-044
Turquoise



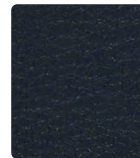
FT-000
Sable



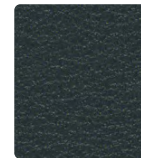
FT-016
Slate



FT-009
Chili



FT-004
Sapphire

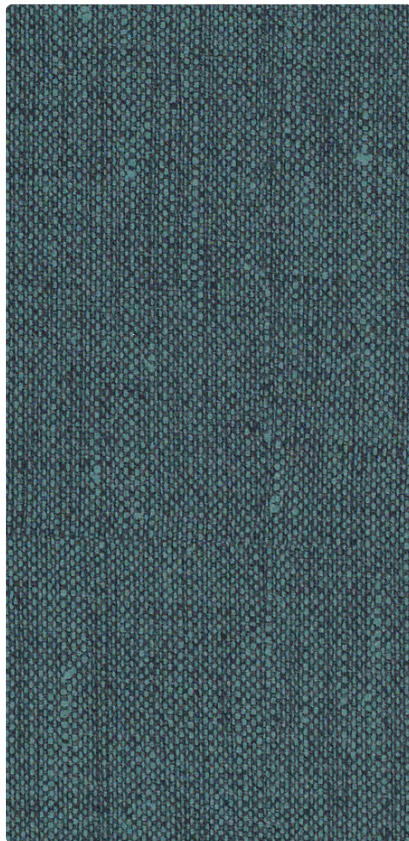


FT-014
Marine

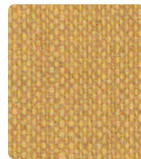


FT-006
Jet

KEY LARGO



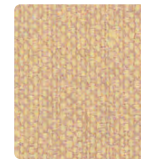
KL-014 Aegean



KL-012
Wheat



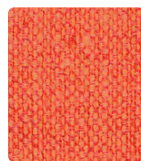
KL-033
Pear



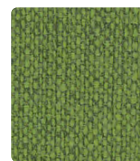
KL-027
Sand



KL-007
Parchment



KL-009
Tangerine



KL-013
Palm



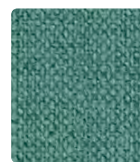
KL-010
Toast



KL-026
Quarry



KL-019
Cayenne



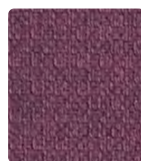
KL-024
Nassau



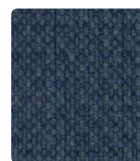
KL-020
Sandstone



KL-006
Graphite



KL-015
Crocus



KL-004
Ultramarine



KL-000
Chocolate



KL-016
Ebony

TECHNICAL INFORMATION

Healthcare Coordinates

Pattern 54"	Content and Backing	Certifications	Weight/ Linear Yd.	Pattern Repeat	Finish	Abrasion Wyzenbeek	Light- Fastness	Flammability	Cleaning Code
FLORENTINO	85% Vinyl - Phthalate Free face, 15% Polyester backing	GREENGUARD	28 oz.	None	Soil & Stain Resistant Top Coat with Ink Resistant Technology	651,000^ Double Rubs	650 hours	Cal. 117-2013 NFPA 260/UFAC Class 1 FMVSS 302	BC, CFC
KEY LARGO <i>Directional</i>	85% Vinyl - Phthalate Free face, 15% Polyester backing	GREENGUARD	28 oz.	None	Soil and Stain Resistant Top Coat with Ink Resistant Technology	250,000^ Double Rubs	650 hours	Cal. 117-2013 NFPA 260/UFAC Class 1 FMVSS 302	BC, CFC

REDUCED ENVIRONMENTAL IMPACT

These products are GREENGUARD Certified for low chemical and particle emissions to UL standard UL 2818 and may contribute to LEED certification.

These products do not pose any exposure risks associated with the chemicals in Prop 65 No FR/Antimicrobial/Antibacterial Additives
Phthalate Free Lead Free BPA Free/TRIS Free/Formaldehyde Free Does not contain Conflict Minerals

CARE AND CLEANING INFORMATION

BC: Bleach Cleanable – 1 part bleach, 9 parts water = 10% bleach, 90% water solution. Do not clean/disinfect fabric for longer than 10 minutes using the 10% bleach solution. Always rinse promptly with clean water after applying the bleach solution. Failure to do so will void any and all warranties.

CFC: Coated Fabrics Cleaning – Refer to Mayer website for complete cleaning info.

DYE TRANSFER DISCLAIMER

Certain clothing and accessory dyes (such as those used on denim jeans) may migrate to lighter colors. This phenomenon is increased by humidity and temperature and is irreversible. Mayer Fabrics will not assume responsibility for dye transfer caused by external contaminants. Please check compatibility when using this product in combination with painted or varnished surfaces.

ADDITIONAL INFORMATION

^Abrasion test results exceeding ACT Performance Guidelines are not an indicator of product lifespan. Multiple factors affect fabric durability and appearance retention.

Warranty: Please refer to the Mayer website for warranty information by pattern.

Custom Colors: All patterns can be custom colored. Minimum yardage applies.

Complete and current product information available at mayerfabrics.com.



These fabrics meet or exceed these ACT performance guidelines.
Certification Marks owned by ACT

©2016
COMHCVC0D_50721



compel® for your whole workspace

MAYER FABRICS