



Pivot Installation Guide

What You Received:

- Worksurfaces
- 30"/36"/24" Legs
- Hat Channels
- Wood Screws
- Mending Plates

Tools You'll Need:

- Drill with Phillips head bit
- Tape measure

This guide is based on an L Shape, Open Frame Leg desk.

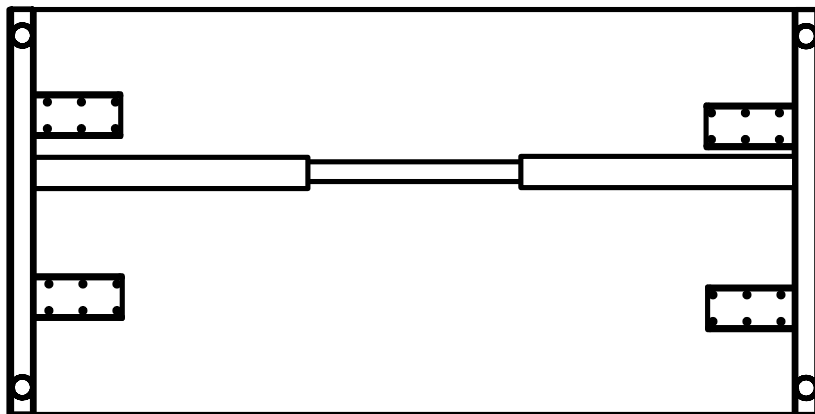


Pivot Installation Guide

1. Lay your worksurfaces out and place the 30"/36" legs on both ends. The outside corners of the surface should be flush with the outside corner of the leg.

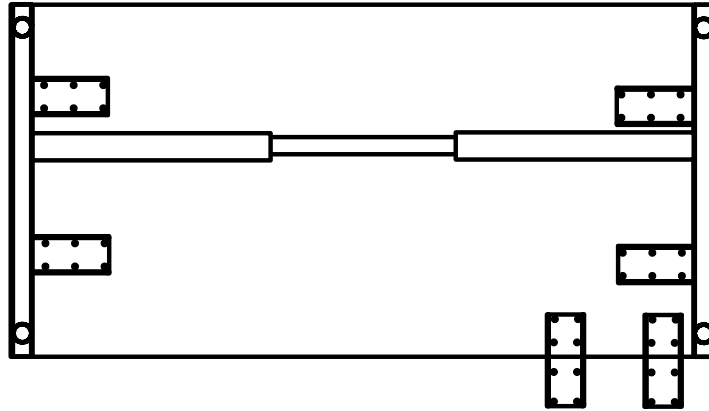


2. Attach work surface support bar 1/3rd of the way from the front of the worksurface. Expand outside portion of each side of the hat channel to fit in the gap between surface and leg. Tighten down center bolts.



Pivot Installation Guide

3. Attached Mending plates to surface where you want the return to lay.



4. Attach Open frame leg to end of the return



5. Flip return rightside up and rest free end of return against mending plates. Align with outside corner and attached top to open side of mending plates.

