



Pivit Open Frame Desk Installation Guide

What You Received:

- Worksurface(s)
- 30"/36"/24" Legs
- Worksurface Support Bar
- Wood Screws
- Mending Plates

Tools You'll Need:

- Drill with Phillips head bit
- Tape measure



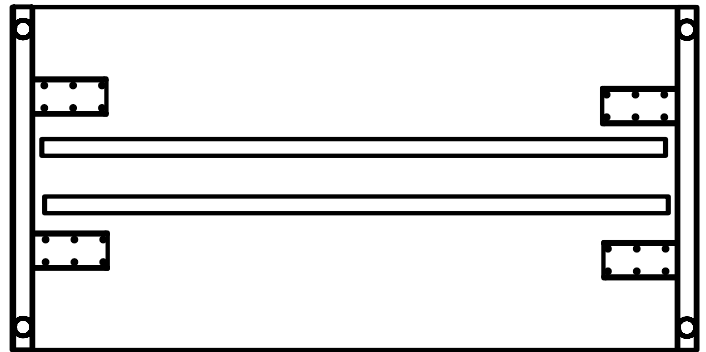
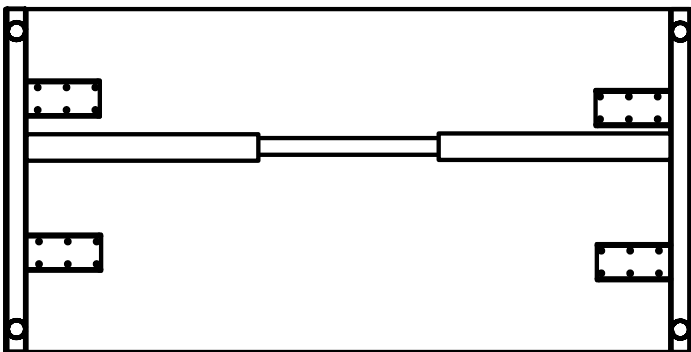
Pivit Desk Installation Guide

1. Lay your worksurfaces out and place the 24"/30"/36" legs on both ends. The outside corners of the surface should be flush with the outside corner of the leg.



2A. Attach work surface support bar 1/3rd of the way from the front of the worksurface. Expand outside portion of each side of the hat channel to fit in the gap between surface and leg. Tighten down center bolts.

2B. If two work surface support bars were received, position an equal distance 1/3 of the way from the back.

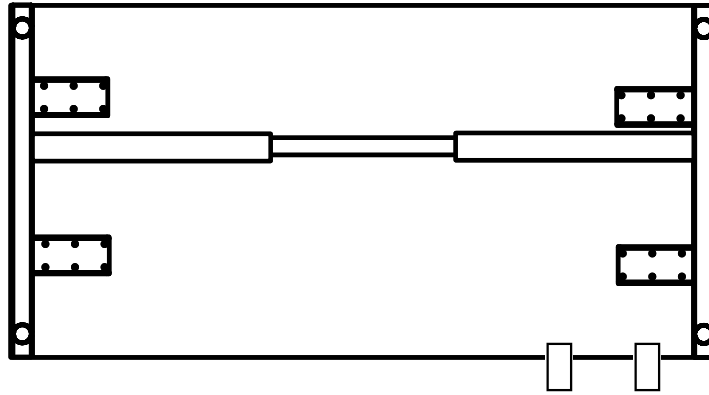


3. Carefully flip desk over. 2 people may be required.

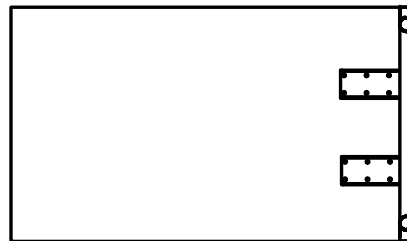


Pivot L-Shaped Desk Installation Guide

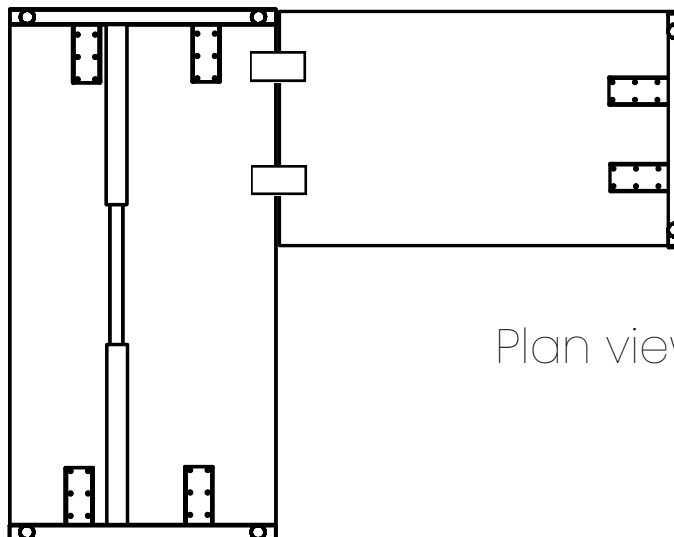
- 3A. Assemble desk as show in 1 & 2. Do not flip desk over yet.
3B. Attached Mending plates to main surface on the right or left side of desk. Space mending plates evenly.



4. Attach single 24" Open frame leg to end of the return.



5. Flip return rightside up and rest free end of return against and under mending plates. Align with outside corner and attached top to open side of mending plates.



Plan view from bottom.

compel[®]

6. Screw in mending plates. Once attached, carefully flip desk and return over, onto legs. 2 people may be required.

